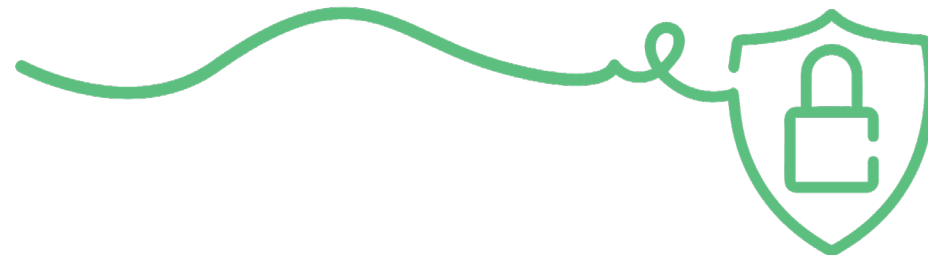




# ACT leave 2025-2026



92 Days	<b>July 2025 (31)</b>					<b>August 2025 (31)</b>					<b>September 2025 (30)</b>						
	Mon	7	14	21	28	Mon	4	11	18	25	Mon	1	8	15	22	29	
	Tue	1	8	15	22	29	Tue	5	12	19	26	Tue	2	9	16	23	30
	Wed	2	9	16	23	30	Wed	6	13	20	27	Wed	3	10	17	24	
	Thu	3	10	17	24	31	Thu	7	14	21	28	Thu	4	11	18	25	
	Fri	4	11	18	25	Fri	1	8	15	22	29	Fri	5	12	19	26	
	Sat	5	12	19	26	Sat	2	9	16	23	30	Sat	6	13	20	27	
Sun	6	13	20	27	Sun	3	10	17	24	31	Sun	7	14	21	28		
92 Days	<b>October 2025 (31)</b>					<b>November 2025 (30)</b>					<b>December 2025 (31)</b>						
	Mon	6	13	20	27	Mon	3	10	17	24	Mon	1	8	15	22	29	
	Tue	7	14	21	28	Tue	4	11	18	25	Tue	2	9	16	23	30	
	Wed	1	8	15	22	29	Wed	5	12	19	26	Wed	3	10	17	24	31
	Thu	2	9	16	23	30	Thu	6	13	20	27	Thu	4	11	18	25	26
	Fri	3	10	17	24	31	Fri	7	14	21	28	Fri	5	12	19	26	
	Sat	4	11	18	25	Sat	1	8	15	22	29	Sat	6	13	20	27	
Sun	5	12	19	26	Sun	2	9	16	23	30	Sun	7	14	21	28		
91 Days	<b>January 2026 (31)</b>					<b>February 2026 (28)</b>					<b>March 2026 (31)</b>						
	Mon	5	12	19	26	Mon	2	9	16	23	Mon	2	9	16	23	30	
	Tue	6	13	20	27	Tue	3	10	17	24	Tue	3	10	17	24	31	
	Wed	7	14	21	28	Wed	4	11	18	25	Wed	4	11	18	25		
	Thu	1	8	15	22	29	Thu	5	12	19	26	Thu	5	12	19	26	
	Fri	2	9	16	23	30	Fri	6	13	20	27	Fri	6	13	20	27	
	Sat	3	10	17	24	31	Sat	7	14	21	28	Sat	7	14	21	28	
Sun	4	11	18	25	Sun	1	8	15	22	Sun	1	8	15	22	29		
91 Days	<b>April 2026 (30)</b>					<b>May 2026 (31)</b>					<b>June 2026 (30)</b>						
	Mon	6	13	20	27	Mon	4	11	18	25	Mon	1	8	15	22	29	
	Tue	7	14	21	28	Tue	5	12	19	26	Tue	2	9	16	23	30	
	Wed	1	8	15	22	29	Wed	6	13	20	27	Wed	3	10	17	24	
	Thu	2	9	16	23	30	Thu	7	14	21	28	Thu	4	11	18	25	
	Fri	3	10	17	24	Fri	1	8	15	22	29	Fri	5	12	19	26	
	Sat	4	11	18	25	Sat	2	9	16	23	30	Sat	6	13	20	27	
Sun	5	12	19	26	Sun	3	10	17	24	31	Sun	7	14	21	28		

  ACT Public Holidays      Return & Payment Due Date

## Lodging quarterly returns

- ✓ Ordinary gross wages\* are wages before tax is deducted.
- ✓ Wages to be entered for all employees that perform relevant work in the ACT only.
- ✓ If an employee has stopped working for you, include their cease date.
- ✓ Avoid penalties—lodge and pay by the due date or request an extension of time.
- ✓ Check out the [Employer – client portal guide](#) on our website for a step-by-step guide to processing your return in the client portal.

### Paid days include

- ✓ Days worked
- ✓ Shift/weekend work
- ✓ Annual leave
- ✓ Sick leave
- ✓ Public holidays
- ✓ Workers' compensation
- ✓ Above award payments

### Employees to include

- ✓ patrol guards, cash-in transit, monitoring centre operator, bodyguard, crowd control etc.
- ✓ Casual, part-time, full-time employees

Visit our [website](#) for a full list

### Paid days do not include

- ✗ Meal/clothing allowance
- ✗ Overtime
- ✗ Travel allowance
- ✗ On call allowance
- ✗ Annual leave loading
- ✗ Work outside the ACT
- ✗ Annual leave paid on termination

### Employees not to include

- ✗ Working Directors
- ✗ excludes work in relation to security equipment

## Need more information?

Office hours: Monday to Friday, 8:30am – 4:30pm

Address: 1/28 Thynne Street, Bruce

Visit: [actleave.act.gov.au](http://actleave.act.gov.au)

Email: [security@actleave.act.gov.au](mailto:security@actleave.act.gov.au)

Call: 02 6247 3900